

Any walls pertaining to the Range Room are completely unchanged, except for the backstop. (Shown by solid black fill)

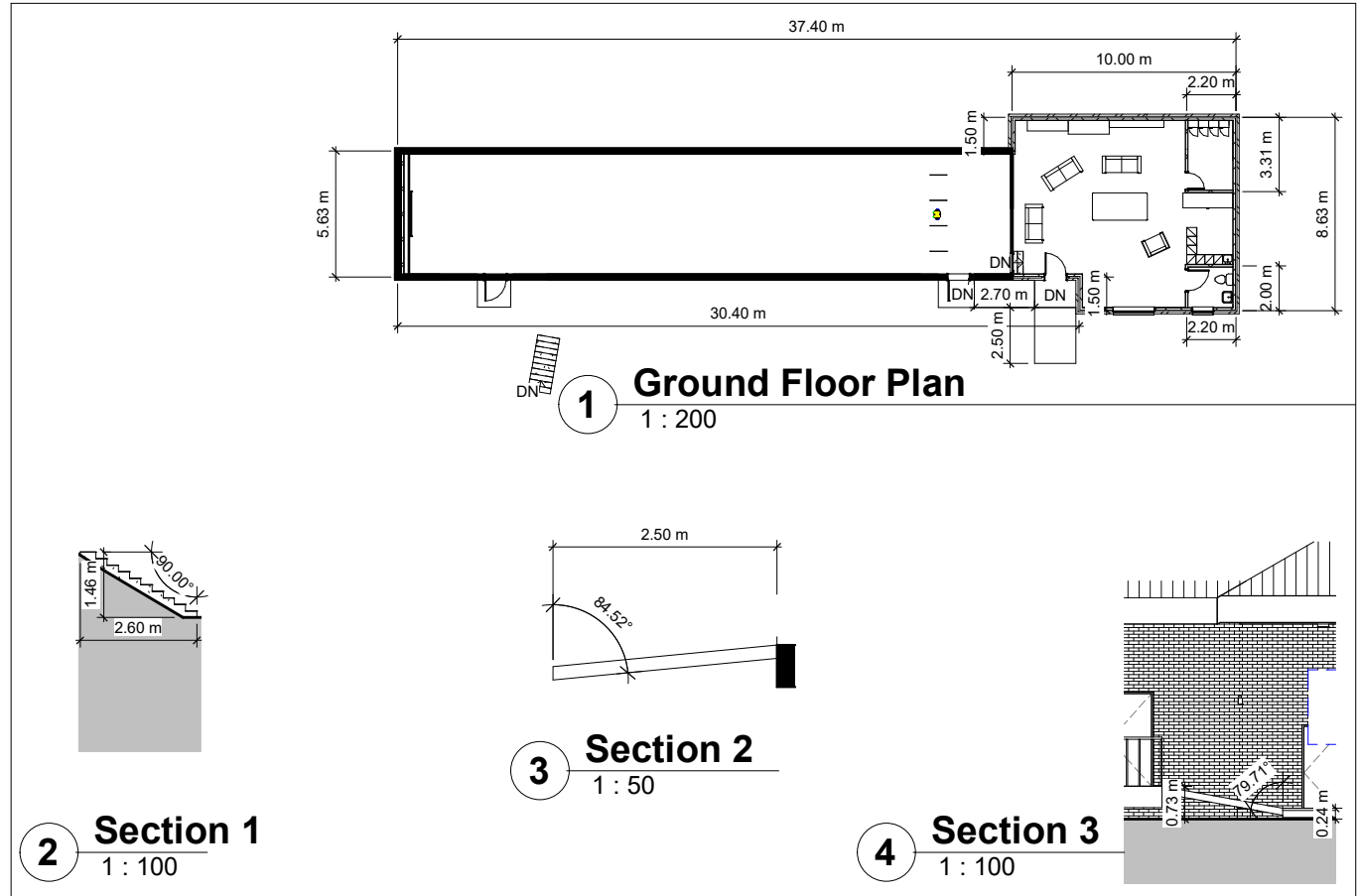
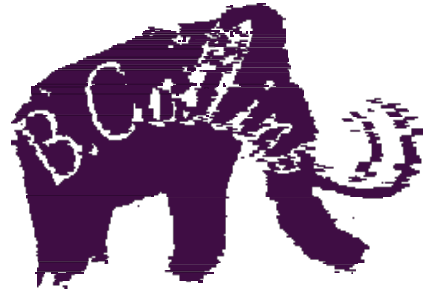
All measurements placed next to the relevant portion of the drawing.

Separate section measurements connected to the relevant area by a line.

Club Room: 0.24m above ground level

Range Room: 0.73m above ground level

Notes



Client

West Meon Rifle Club & Range

Description

Measurements of the new building, after the extensions have been added to the initial site

Page Size

A3 297mm x 420mm

Design Date

26/11/2020

Scale

Relevant scale shown on viewport.